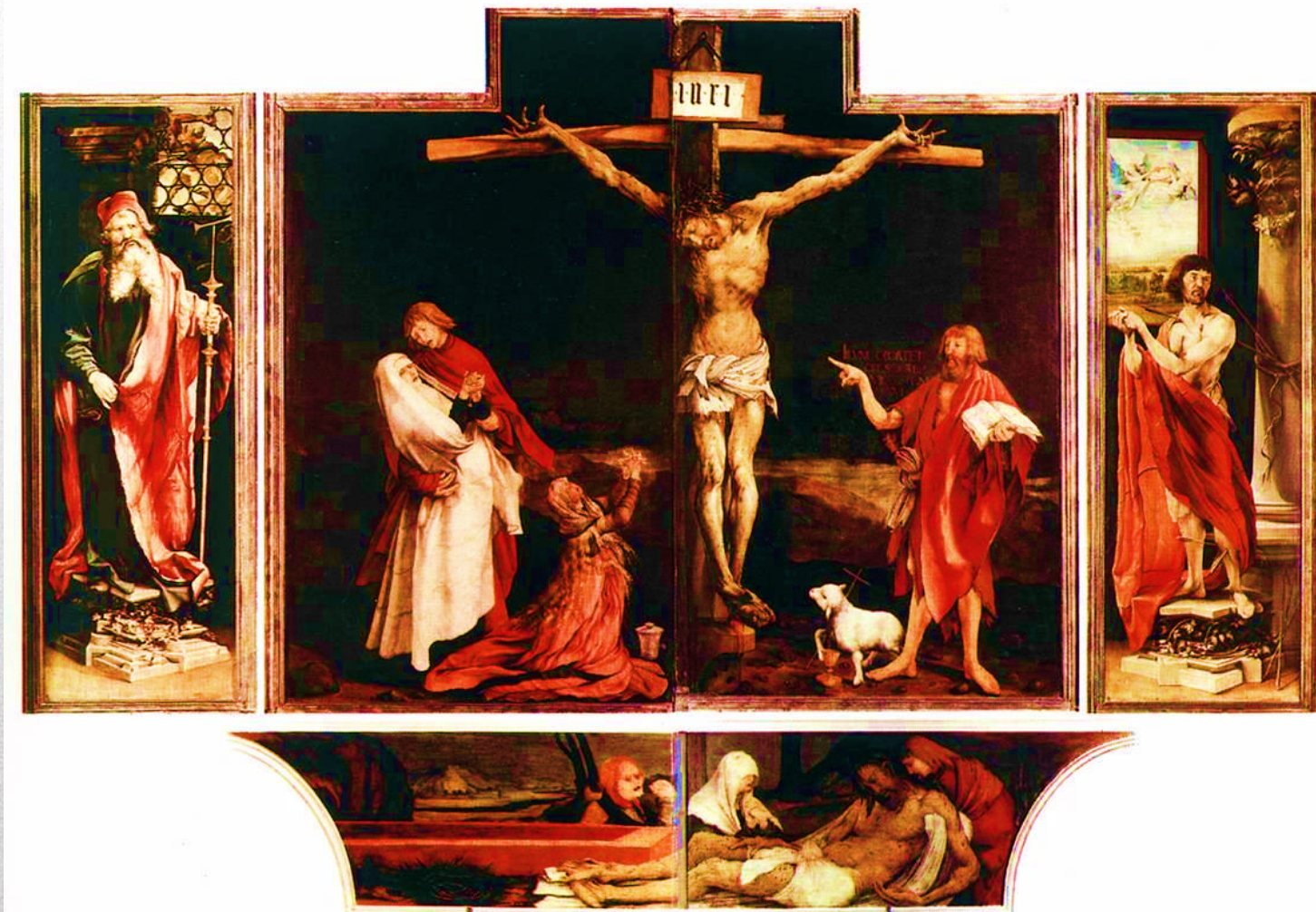


# “Spiritual Journey as The Way of the Cross”



*Adapted from Bruteau, Beatrice, “The Easter Mysteries.” Crossroad Publishing Company, New York, 1995: Ch. 6, pp 91-116.*



## 1<sup>st</sup> Station

## Jesus is Condemned to Death



This is our condition  
We know we have to die

Intuition of our vocation to eternal life :  
Even when we die we will be changed

Voluntary assumption of a spiritual journey  
We open ourselves up for transformation  
Our sense of self must die

Our false self - ego, selfish, cruel, stingy,  
thoughtless, lazy self

---

*... is condemned to death...*



## 2<sup>nd</sup> Station

## Jesus Carries His Cross

We accept the burden of spiritual practices:  
scripture readings, prayer, meditation, charitable  
works, trying to overcome our faults

We believe this is the program that will help  
us pass from our old life to the new one

We accept it,  
Happy to do it, it's new, romantic  
Begin to build life around our new practices  
Try to persuade others to join us



---

*...but it is going to be a protracted struggle....*



## 3<sup>rd</sup> Station

## Jesus Falls the first Time



Soon we find it's not smooth sailing

We don't live up to our own high expectations,  
ideals

We keep doing things unworthy of our calling

It hurts and puzzles us

We don't do the things we want to do, and the  
things we don't want to do, are the very things  
we find ourselves doing- in spite of our  
resolutions and efforts.

---

*...Romans 7:15-24...*



## 4<sup>th</sup> Station

## Jesus Meets His Mother

Realize that falling is part of the journey  
Confronted with temptations  
We may turn back to the beginning of  
our Spiritual life

Mary is the Mother of our Spiritual life

Turn to Our Blessed Mother  
for comfort and renewal of our faith

Discovery the Holy Mother is the foundation  
of our self  
Not exactly as we thought

Nourished even through our  
struggles, faults and failings



---

*...an opening has begun...*



## 5<sup>th</sup> Station Simon of Cyrene Helps Carry the Cross

Become more sensitive to positive influences – become more grateful  
What was taken for granted before – become aware of the gifts of Love to us

Begin to  
understand  
ourselves better –  
become more  
compassionate to  
others



Begin to believe God  
Loves everyone as a  
dear child and He  
extends Grace to all.

Become more sensitive to little  
things –  
mindful of little things  
we do or we don't do

---

*...our sense of self is beginning to stretch...*



## 6<sup>th</sup> Station

## Veronica Wipes the Face of Jesus

Begin showing compassion  
as we accept another's offer to help

Learn to receive is as important as to give

Medium of Grace:  
Meaning of 'True Image'  
Jesus as the image of the invisible God

Heart of the Christian Mystery and revelation  
We are conformed  
to the image  
of His Son



---

*...beginning to perceive deeper meanings and real selfhood...*



## 7<sup>th</sup> Station

## Jesus Falls a second Time



Different people now ~  
Our life is noticeably purified

We don't do most of the bad things we used to do  
We do many new good deeds

New level of faults  
acknowledgment, gratitude, recognition,  
admiration, respect, shame and anger

Desire for admiration  
Cannot co-exist with the Divine  
Resist the temptation to measure ourselves

---

*...only way to full enlightenment is to keep a single eye...*



## 8<sup>th</sup> Station

## Jesus Meets the Women of Jerusalem

Central concern of spiritual life shifts  
Opens up – stretches our desire  
for salvation of the whole world

Disciples of Christ  
Concern self with sinful world  
Take our share of carrying it  
Give ourselves for its welfare  
and fullness of life

We realize that to share in the Divine life  
We must be like Christ

Divinity not something to be clung to  
As He emptied Himself into the world  
to be its food and drink



---

*... John 10:10...*



## 9<sup>th</sup> Station

## Jesus Falls a Third Time



Close to the mystical time of self-loss and transformation

Took great effort to open ourselves up to Divine Grace  
tried hard to do this, stop doing this, let go,  
give here, and accept there....

Eyes are open to see God's Grace is fully available to us  
Here and now – in the present moment

Begin to understand that we are  
Living with the Father now and always

Yet we cast ourselves out as the separated child,  
struggling to get back

Must stop concerning ourselves with our self and own merits  
Must stop “trying so hard” to be good

God in us does not require any effort on our part  
“I AM” is available to us, in us, is making us “to be.”

Availability of the Divine Kingdom is ‘The Good News.’

---

*...relinquish our barriers and be fully present....*



10<sup>th</sup>....11<sup>th</sup> Stations

# The Death of The Word

Entering into the Mystical Night... Human nature is transcended  
Holy Spirit Appears

Final leg  
of the  
Journey  
toward  
Divine  
emptiness



Dark Night  
of the Soul  
crisis in  
and  
fundamental  
shift  
of  
consciousness



Spiritual  
energy  
goes  
out from  
us  
enters  
into  
and  
nurtures  
others....

Model  
for love:  
Essential  
Spiritual drive  
the movement of –  
or toward –  
Perfection

Reveals our essential self  
We are to be like this, “perfect as your  
heavenly Father is perfect.” *Matt 5:48*

AGAPE  
the  
love that  
seeks the  
benefit of  
the  
Beloved

*...confront the ultimate question of meaning...*



## 12th Station

## The Death of The Word

What we seek cannot be known

We must give up our worldview, our culture, ultimately our God concept

Feels as if God abandons us



The Word must  
die  
in order for  
our vision  
to turn inward  
to  
Godlike  
consciousness

---

*/ tell you the truth: it is to your advantage that / go away, for if / do not go away, the Paraclete will not come to you; but it / go, / will send him to you.” John 16:7*

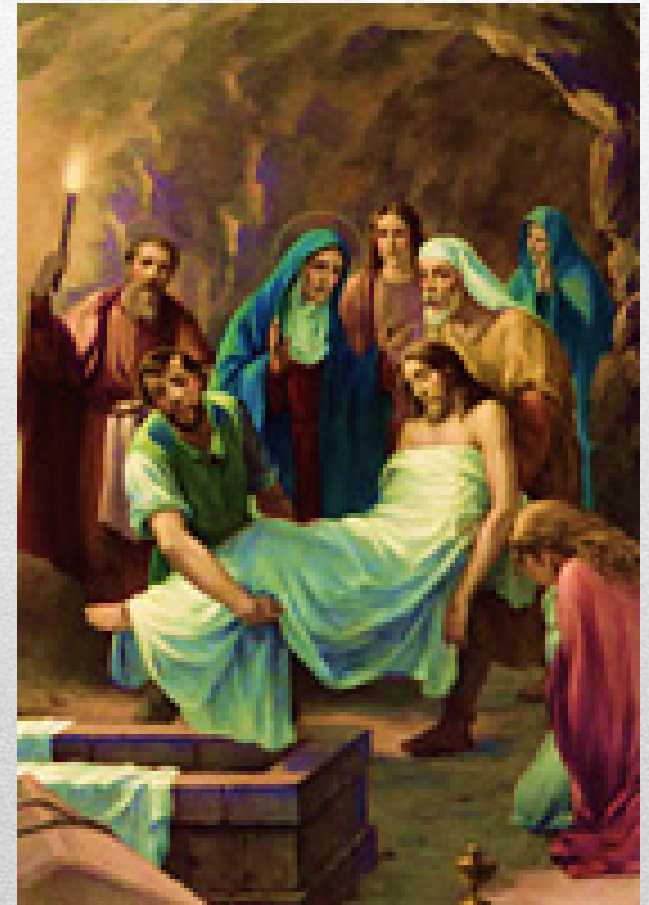


## 13<sup>th</sup>.....14<sup>th</sup> Stations The Death of The Word

“We must not “continue to cling to” The Word, but allow it to be thoroughly withdrawn back to the Truth.” John 20:17



Then  
we are drawn  
back into our  
center,  
into our spirit,  
into that whose  
origin  
and  
destination are  
unknown  
and  
unknowable





This is our reality; we are “born of the Spirit”  
We are Spirit

“To  
live  
according  
to the spirit  
is to love  
according  
to the spirit”  
*St. Francis de Sales*



We cannot project this reality in front of us and examine it

---

*We “know” it by Being it*



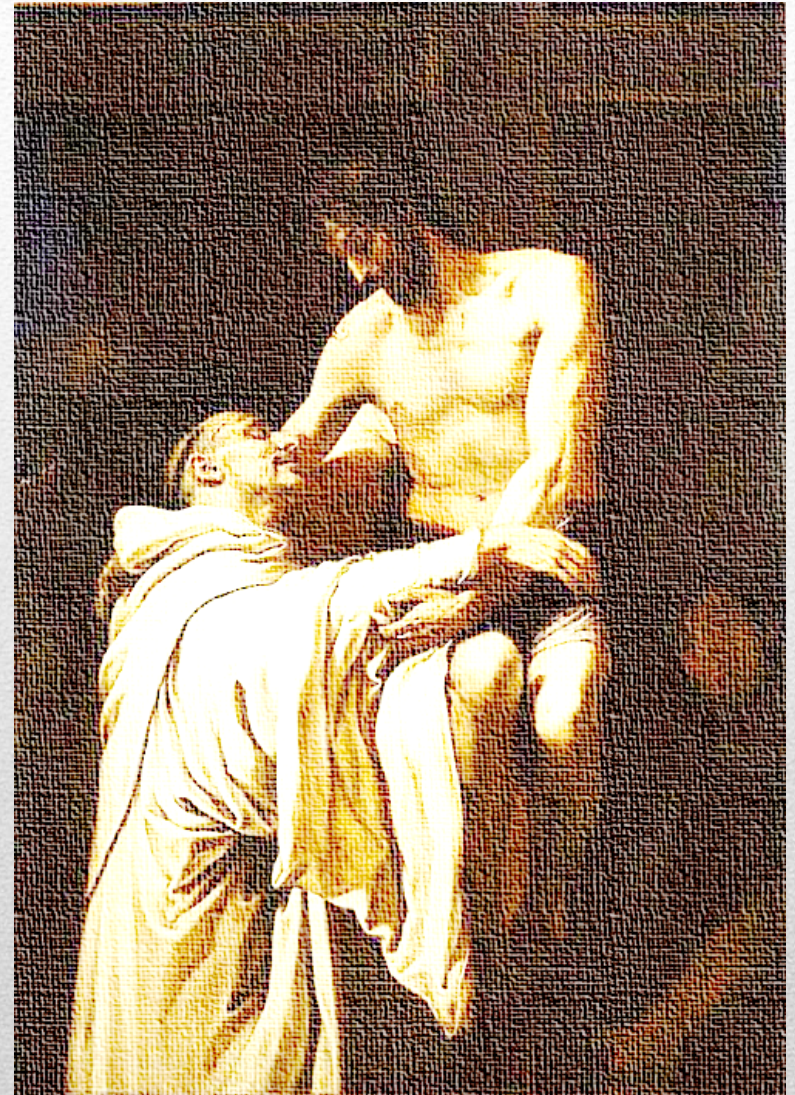
# ALL ABOUT LOVE

“All the good we do, we do for  
love of God, and the evil we  
avoid, we avoid for the love of  
God.”

*St. Francis de Sales*

“It is love that gives value to all our  
works; it is not by the greatness or  
multiplicity of our works that we please  
God but by the love with which we do  
them.”

*St. Francis de Sales*



---

*Passionate Human thirst for God meets an Equally passionate Divine thirst for us*